

Every day counts at Stanton Vale

Why do I need to come to school?

At school I can learn new things

At school I can be with my friends

At school I can experience new things and have fun

Why is attendance so important?

Inclusive attendance is a shared responsibility among schools, families, and students. It is crucial to act in the child's best interests, look beyond the absence, and recognise risk signs, unmet needs, and hidden vulnerabilities early.

Better Learning: Regular attendance helps children keep up with lessons.

Skill Building: Every school day offers valuable learning that supports personal and academic growth.

Social Skills: Being in school helps children build friendships and learn how to work with others.

Healthy Routines: Attending school daily builds good habits like time management and responsibility.

Teacher Support: Regular attendance allows teachers to give your child the help they need.

Avoiding Gaps: Missing school can lead to falling behind, making it harder to catch up.

Full Participation: Children who attend regularly can enjoy clubs, sports, and other school activities.

Legal Responsibility: Parents are legally required to ensure their child attends school.

Stronger Communities: Good attendance sup-

Meet the attendance team

Executive Head and Head of school

Emma Kehoe and Rachel Beckett

School Admin assistant

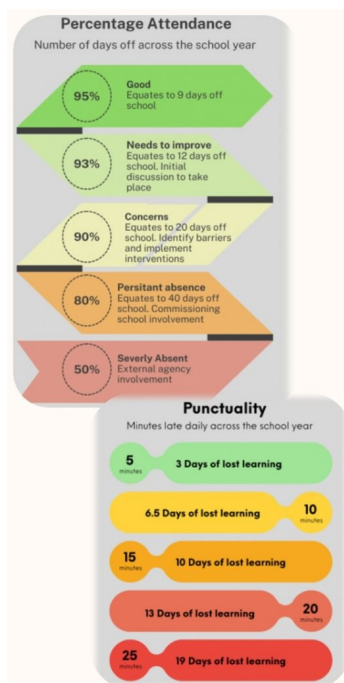
Jennifer Gregory

DSL and pastoral manager

Lisa Barlow

Deputy Headteacher/senior attendance champion

Hannah Jenkinson



Reporting Absence: Procedure

If your child is absent from school, please contact the school office **before 8.35am on: 0115 972 9769**. If absence is more than a day, call school each day to update.

If we haven't heard from you on the **1st day** of absence we will work through emergency contact numbers to establish reason for absence. If a valid reason is not provided, the absence will go down as unauthorised.

If we haven't heard from you on the **2nd day** of absence we will work through emergency contact numbers to establish the reason for absence.

If there are 3 consecutive days of absence then a home visit will be completed by a member of the attendance team

School will continue to regularly monitor attendance and punctuality of students and will update parents/carers if we have any concerns. We will arrange meetings to understand potential barriers to attendance and provide support to ensure your child attends school regularly.

If we have any further concerns we will involve the commissioning school in the process of supporting school attendance, which might include referrals to external agencies like the police or social care.

If the reason for absence is a medical reason, please provide evidence of appointment on request.

NO

Unauthorised Absence

YES

END